

Function	Flow [max]	Manifold mounting	Series
<b>2/2</b>	<b>Up to 0.08 Cv</b>	<b>Cartridge</b>	<b>BV210A</b>

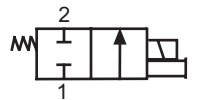
### OPERATIONAL BENEFITS

1. Short stroke with high shifting forces
2. Balanced poppet, immune to pressure fluctuations
3. Precise repeatability
4. Solenoid isolated from contaminated air
5. Very few parts
6. Extremely long life
7. Unique mounting - no fasteners or screws required



### How To Order

<b>VALVE</b>	
Type	2 Way
Cartridge (Standard)	BV210A-CA1-00-XXXX-XXX
Cartridge (Axial Flow)	BV210A-CB0-00-XXXX-XXX



### SOLENOID OPERATOR

Solenoid		Voltage		Lead wire length		Solenoid can (round)		Solenoid cover		
<b>B</b> Round		<b>EH</b> 24VDC (2.5W)		<b>0</b> † No lead wire		<b>C</b> For Top Cover		<b>JST</b>	<b>Pico</b>	<b>Flying Leads</b>
		<b>EG</b> 24VDC (4.0W)		<b>A</b> 18"		Option and Can w/		<b>TA</b>		<b>BA</b> No ground wire
		<b>EK</b> 12VDC (2.5W)		<b>B</b> 24"		Outer Threads		<b>TC</b>	<b>PC</b>	<b>BC</b> Blocking & suppr. diode & LED (no ground)
		<b>EJ</b> 12VDC (4.0W)		<b>C</b> 36"				<b>TE</b>	<b>PE</b>	<b>BE</b> Blocking & suppr. diode (no ground)
				<b>D</b> 48"				<b>TG</b>	<b>PG</b>	<b>BG</b> LED (no ground)
				<b>E</b> 72"				<b>TJ</b>	<b>PJ</b>	<b>BJ</b> MOV (no ground)
				<b>F</b> 96"				<b>TL</b>	<b>PL</b>	<b>BL</b> LED & MOV (no ground)
				<b>H</b> 144" † Not available for flying leads cover Only option for Pico cover				<b>PN</b>		Transfer Board

XXXX - XXX

\* High wattage - high speed options - consult factory  
High wattage configurations require intermittent duty cycles.

\*\* ERC - Energy Reduction Circuitry - Reduces the effective wattage at continuous duty  
ERC wattage reduction options - consult factory

Note: Pico covers PC-PL have a 3rd Pin which is a location pin

### CIRCUIT BAR

Bullet valve type	Cyl. port size	Spacing (mm)	Side cylinder port	Bottom cylinder port
Standard	#10-32 UNF	12	CCMV10A-00AAA-xx	CCMV10A-00BAA-xx
	M5	12	CCMV10A-00AAB-xx	CCMV10A-00BAB-xx
	M7	12	CCMV10A-00AAC-xx	CCMV10A-00BAC-xx
Axial flow	#10-32 UNF	12	-	CCMV10A-00BDA-xx
	M5	12	-	CCMV10A-00BDB-xx
	M7	12	-	CCMV10A-00BDC-xx

xx = Number of stations

Note: for valves mounted to bar at factory, add -9 to model numbers.

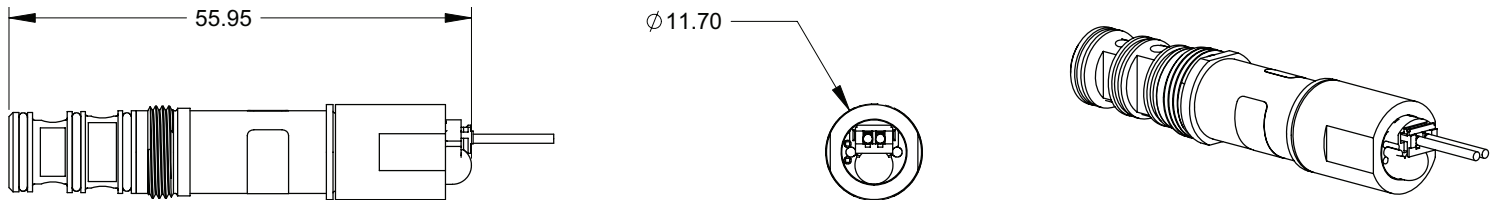
## Technical Data

<b>Fluid:</b>	Compressed air, vacuum, inert gases
<b>Pressure range:</b>	Vacuum to 120 PSI
<b>Lubrication:</b>	Not required, if used select a medium aniline point lubricant (between 180°F and 210°F)
<b>Filtration:</b>	40μ
<b>Temperature range:</b>	0°F to 120°F (-18°C to +50°C)
<b>Flow (at 6 bar ΔP=1bar):</b>	Up to 0.08 Cv
<b>Voltage range:</b>	-15% to +10% of nominal voltage

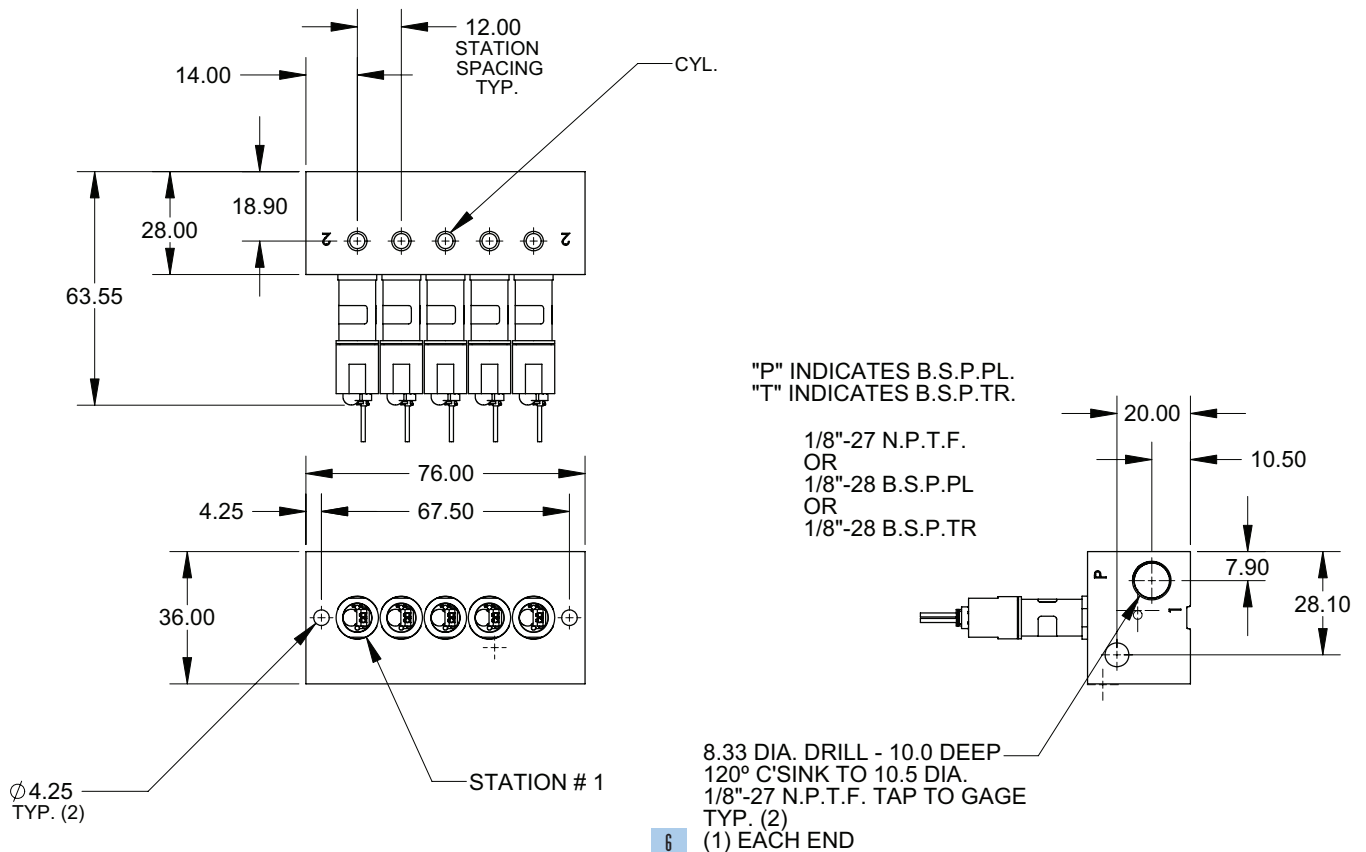
**Tools:** Manifold cavity step reamer: T-6960 • Insertion/removal socket: AT-1181 (Bit) AT-1185 (Bit Holder) AT-1184 (Handle)

## Dimensions

### Bullet Valve with "JST" Cover and Circuit Board for LED., MOV., & Diode Options BV210A (2-way) - Standard Watt



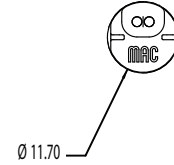
### CCMV10A - SIDE PORTS



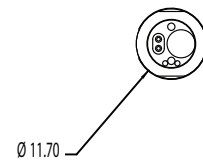
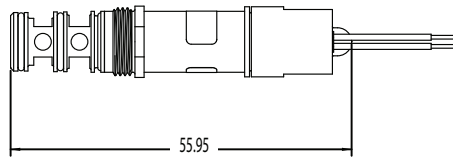
# Connector Options

## BV210

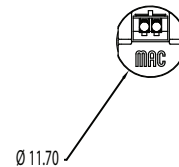
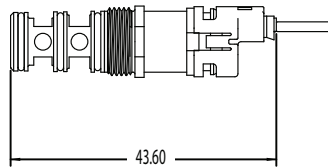
**Flying Leads (BA)**



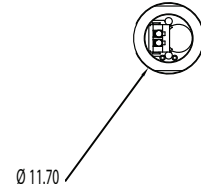
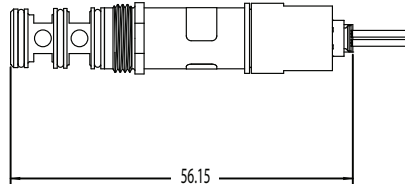
**Flying Leads w/ LED (BC, BG, BL)**



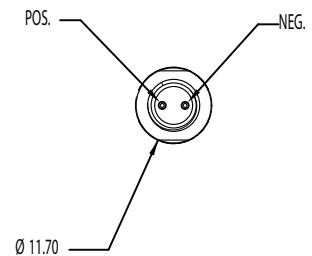
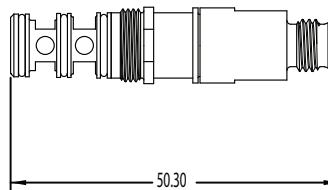
**JST Connector (TA)**



**JST Connector w/ LED (TG, TL)**



**2 Pin PICO (PN)**



**3 Pin PICO (PC, PE, PG, PJ, PL)**

