

Function	Flow [max]	Manifold mounting	Series
2/2	Up to 0.24 Cv	Cartridge	BV214A

OPERATIONAL BENEFITS

1. Short stroke with high shifting forces
2. Balanced poppet, immune to pressure fluctuations
3. Precise repeatability
4. Solenoid isolated from contaminated air
5. Very few parts
6. Extremely long life
7. Unique mounting - no fasteners or screws required



How To Order

VALVE	Type	2-Way (standard)	2-Way (axial flow)
	Cartridge	BV214A-CA1-00- xxxx-xxx	BV214A-CB0-00- xxxx-xxx

SOLENOID OPERATOR

Solenoid		Voltage	Lead wire length	Solenoid can (round)	Solenoid cover																								
B Round	CA	24VDC (1.0W)	0* No lead wire	C For Top Cover Option and Can w/ Outer Threads	<table border="1"> <thead> <tr> <th colspan="3">JST Pico Flying Leads</th> </tr> </thead> <tbody> <tr> <td>TA</td> <td>BA</td> <td>No ground wire</td> </tr> <tr> <td>TC</td> <td>PC</td> <td>Blocking & suppr. diode & LED (no ground)</td> </tr> <tr> <td>TE</td> <td>PE</td> <td>Blocking & suppr. diode (no ground)</td> </tr> <tr> <td>TG</td> <td>PG</td> <td>LED (no ground)</td> </tr> <tr> <td>TJ</td> <td>PJ</td> <td>MOV (no ground)</td> </tr> <tr> <td>TL</td> <td>PL</td> <td>LED & MOV (no ground)</td> </tr> <tr> <td colspan="3">PN Transfer Board</td> </tr> </tbody> </table>	JST Pico Flying Leads			TA	BA	No ground wire	TC	PC	Blocking & suppr. diode & LED (no ground)	TE	PE	Blocking & suppr. diode (no ground)	TG	PG	LED (no ground)	TJ	PJ	MOV (no ground)	TL	PL	LED & MOV (no ground)	PN Transfer Board		
	JST Pico Flying Leads																												
	TA	BA	No ground wire																										
	TC	PC	Blocking & suppr. diode & LED (no ground)																										
	TE	PE	Blocking & suppr. diode (no ground)																										
	TG	PG	LED (no ground)																										
	TJ	PJ	MOV (no ground)																										
	TL	PL	LED & MOV (no ground)																										
	PN Transfer Board																												
	CB	24VDC (1.8W)	A 18"																										
CC	24VDC (2.5W)	B 24"																											
CD	24VDC (3.0W)	C 36"																											
CE	24VDC (4.0W)	D 48"																											
CF	12VDC (1.0W)	E 72"																											
CG	12VDC (1.8W)	F 96"																											
CH	12VDC (2.5W)	H 144"																											
CJ	12VDC (3.0W)	*Not available for flying leads cover																											
CK	12VDC (4.0W)	Only option for Pico cover																											

CIRCUIT BAR

Bullet valve type	Cyl. port size	Spacing (mm)	Side cylinder port	Bottom cylinder port
Standard	M7	17	CCMV14A-00AAA- xx	CCMV14A-00BAA- xx
	1/8"	17	CCMV14A-00AAB- xx	CCMV14A-00BAB- xx
	5/32 tube recpt.	17	CCMV14A-00AAC- xx	CCMV14A-00BAC- xx
Axial flow	M7	17	-	CCMV14A-00BDA- xx
	1/8"	17	-	CCMV14A-00BDB- xx

xx = Number of stations

Note: for valves mounted to bar at factory, add -9 to model numbers.

† Requires special spacing - - consult factory

Note: Common inlet & exhaust are 1/4" NPTF
For BSPPL or BSPTR threads consult factory

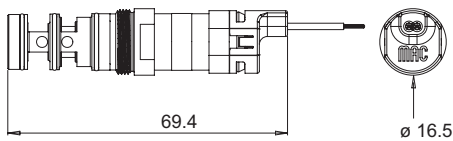
Technical Data

Fluid:	Compressed air, vacuum, inert gases
Pressure range:	Vacuum to 120 PSI
Lubrication:	Not required, if used select a medium aniline point lubricant (between 180°F and 210°F)
Filtration:	40μ
Temperature range:	0°F to 120°F (-18°C to +50°C)
Flow (at 6 bar, Δ P=1bar):	Up to 0.24 Cv (4.0 W)
Voltage range:	-15% to +10% of nominal voltage

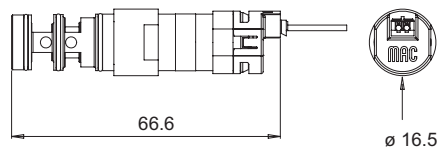
Tools: Manifold cavity step reamer: T-7331 • Insertion/removal socket: AT-1263 (Bit) AT-1185 (Bit Holder) AT-1264 (Handle)

Dimensions

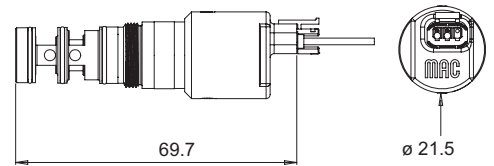
Flying leads



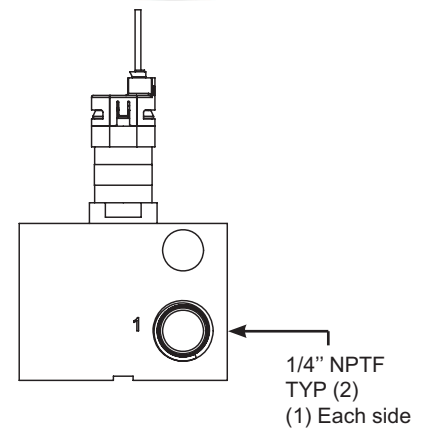
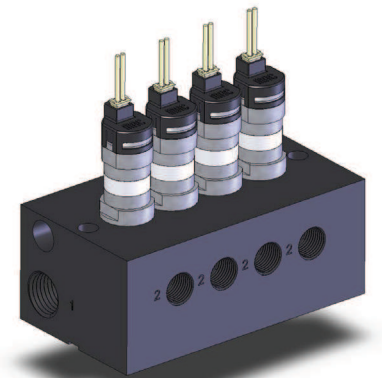
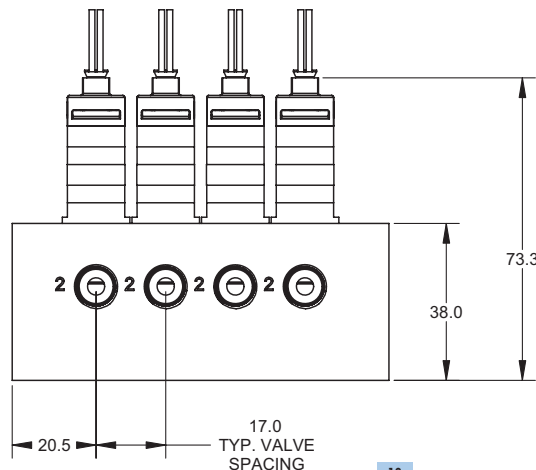
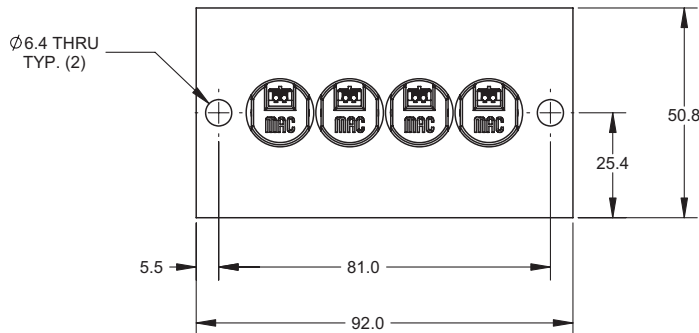
JST Connector



MAC Jac



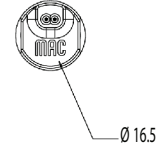
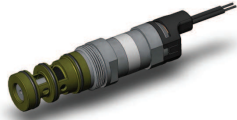
CCMV14A bar with BV214A valves



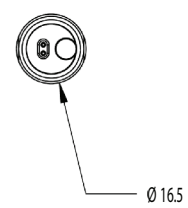
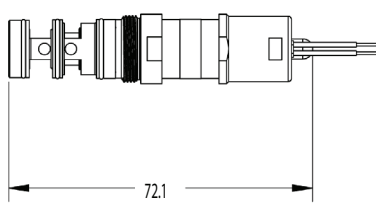
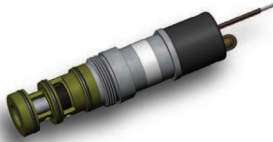
Connector Options

BV214

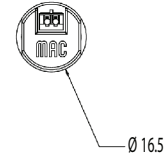
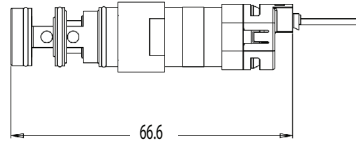
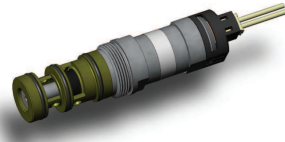
Flying Leads (BA)



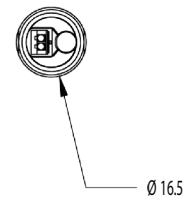
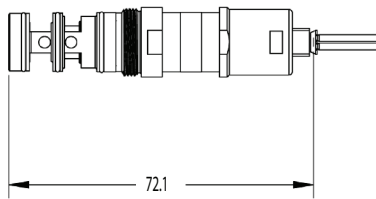
Flying Leads w/ LED (BC, BG, BL)



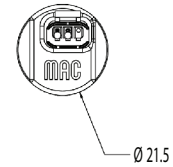
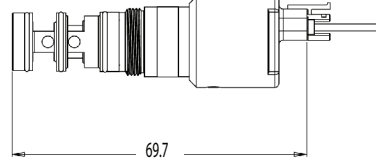
JST Connector (TA)



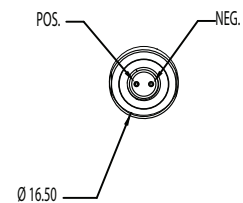
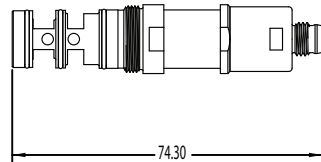
JST Connector w/ LED (TC, TG, TL)



MAC Jac (GA)



2 Pin PICO (PN)



3 Pin PICO (PC, PE, PG, PJ, PL)

