

Function	Flow [max]	Manifold mounting	Series
3/2	Up to 0.24 Cv	Cartridge	BV314A

OPERATIONAL BENEFITS

1. Short stroke with high shifting forces
2. Balanced poppet, immune to pressure fluctuations
3. Precise repeatability
4. Solenoid isolated from contaminated air
5. Very few parts
6. Extremely long life
7. Unique mounting - no fasteners or screws required



How To Order

VALVE

Type	3-Way N.C.	3-Way universal valve
Cartridge	BV314A-CC1-00-xxxx-xxx	BV314A-CD1-00-xxxx-xxx

SOLENOID OPERATOR

X XX X - X XX

Solenoid	Voltage	Lead wire length	Solenoid can (round)	Solenoid cover																								
B Round	CA 24VDC (1.0W) CB 24VDC (1.8W) CC 24VDC (2.5W) CD 24VDC (3.0W) CE 24VDC (4.0W) CF 12VDC (1.0W) CG 12VDC (1.8W) CH 12VDC (2.5W) CJ 12VDC (3.0W) CK 12VDC (4.0W)	0* No lead wire A 18" B 24" C 36" D 48" E 72" F 96" H 144"	C For Top Cover Option and Can w/ Outer Threads	<table border="1"> <thead> <tr> <th>JST</th> <th>Pico</th> <th>Flying Leads</th> </tr> </thead> <tbody> <tr> <td>TA</td> <td>BA</td> <td>No ground wire</td> </tr> <tr> <td>TC</td> <td>PC</td> <td>Blocking & suppr. diode & LED(no ground)</td> </tr> <tr> <td>TE</td> <td>PE</td> <td>Blocking & suppr. diode (no ground)</td> </tr> <tr> <td>TG</td> <td>PG</td> <td>LED (no ground)</td> </tr> <tr> <td>TJ</td> <td>PJ</td> <td>MOV (no ground)</td> </tr> <tr> <td>TL</td> <td>PL</td> <td>LED & MOV (no ground)</td> </tr> <tr> <td></td> <td>PN</td> <td>Transfer Board</td> </tr> </tbody> </table>	JST	Pico	Flying Leads	TA	BA	No ground wire	TC	PC	Blocking & suppr. diode & LED(no ground)	TE	PE	Blocking & suppr. diode (no ground)	TG	PG	LED (no ground)	TJ	PJ	MOV (no ground)	TL	PL	LED & MOV (no ground)		PN	Transfer Board
JST	Pico	Flying Leads																										
TA	BA	No ground wire																										
TC	PC	Blocking & suppr. diode & LED(no ground)																										
TE	PE	Blocking & suppr. diode (no ground)																										
TG	PG	LED (no ground)																										
TJ	PJ	MOV (no ground)																										
TL	PL	LED & MOV (no ground)																										
	PN	Transfer Board																										
		*Not available for flying leads cover Only option for Pico cover		† GA MAC JAC Connector																								

Note: Pico covers PC-PL have a 3rd Pin which is a location pin

CIRCUIT BAR

Cyl. port size	Spacing (mm)	Side cylinder port	Bottom cylinder port
M7	17	CCMV14A-00ABA-xx	CCMV14A-00BBA-xx
1/8"	17	CCMV14A-00ABB-xx	CCMV14A-00BBB-xx
5/32 tube receptacle	17	CCMV14A-00ABC-xx	CCMV14A-00BBC-xx

xx = Number of stations

Note: for valves mounted to bar at factory, add -9 to model numbers.

† Requires special spacing - - consult factory

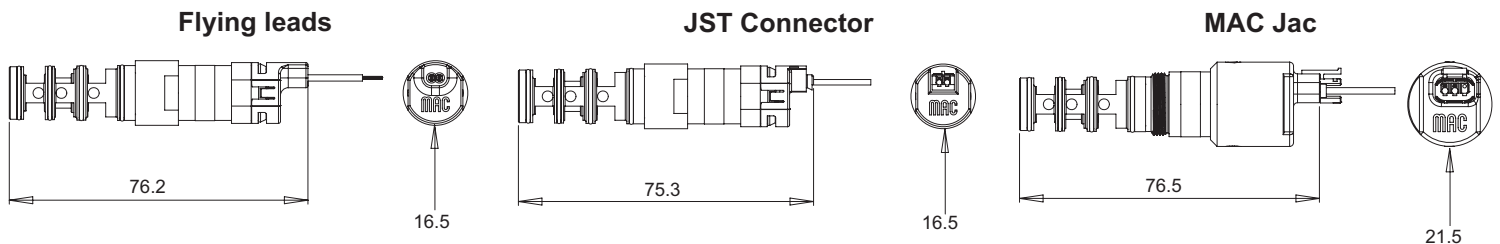
Note: Common inlet & exhaust are 1/4" NPTF
For BSPPL or BSPTR threads consult factory

Technical Data

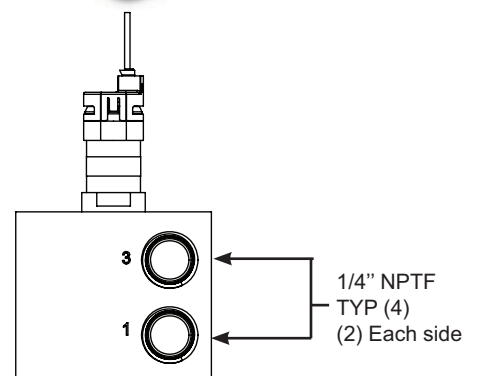
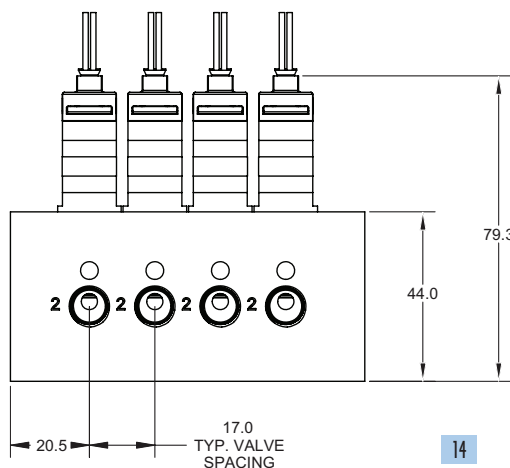
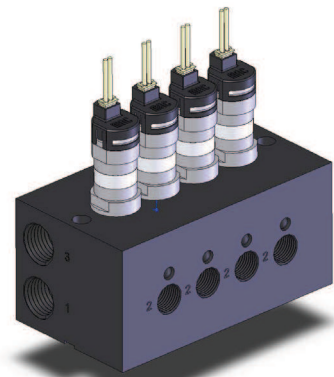
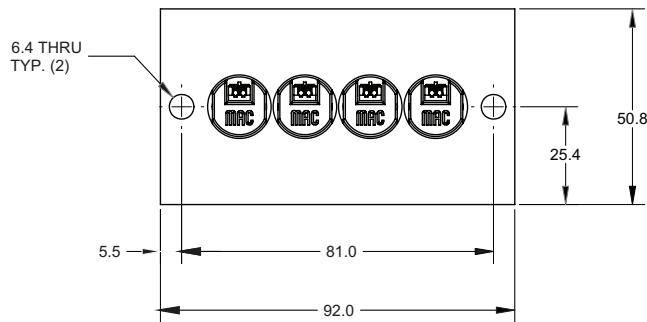
Fluid:	Compressed air, vacuum, inert gases
Pressure range:	Vacuum to 120 PSI
Lubrication:	Not required, if used select a medium aniline point lubricant (between 180°F and 210°F)
Filtration:	40µ
Temperature range:	0°F to 120°F (-18°C to +50°C)
Flow (at 6 bar, Δ P=1bar):	Up to 0.24 Cv (4.0 W)
Voltage range:	-15% to +10% of nominal voltage

Tools: Manifold cavity step reamer: T-7321 • Insertion/removal socket: AT-1263 (Bit) AT-1185 (Bit Holder) AT-1264 (Handle)

Dimensions



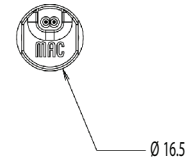
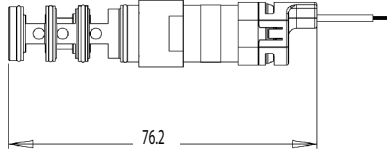
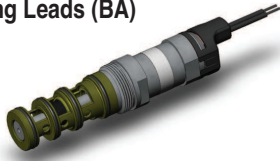
CCMV14A bar with BV314A valves



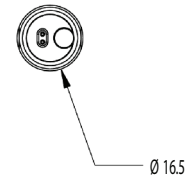
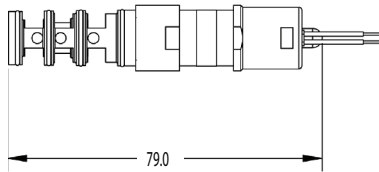
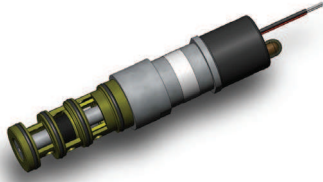
Connector Options

BV314

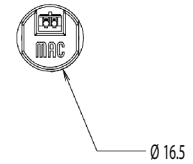
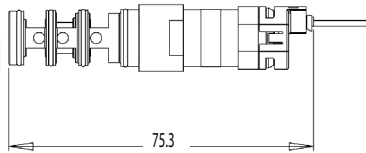
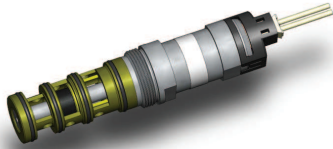
Flying Leads (BA)



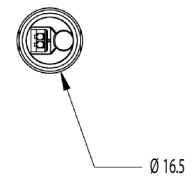
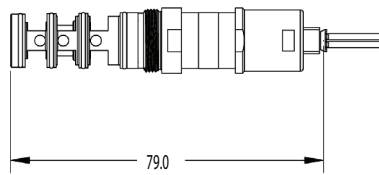
Flying Leads w/ LED (BC, BG, BL)



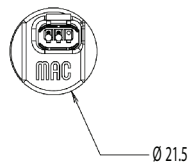
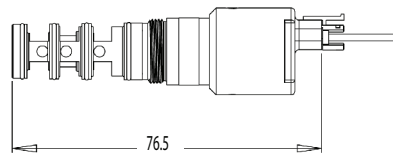
JST Connector (TA)



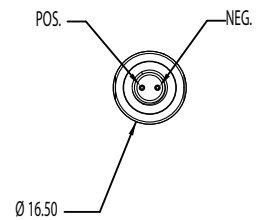
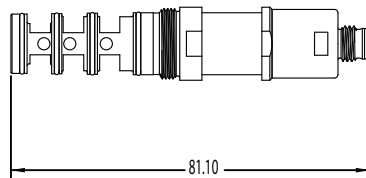
JST Connector w/ LED (TC, TG, TL)



MAC Jac (GA)



2 Pin PICO (PN)



3 Pin PICO (PC, PE, PG, PJ, PL)

