

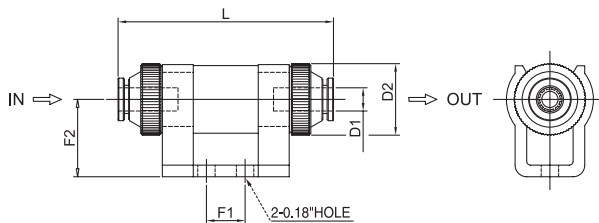
## Line Vacuum Filter (LV-filter)

- Simply pushing the tube into the LV-filter (no other operation is required)
- Excellent filtering (minimum particle, 10 micron)
- Easy to check and replaceable filter element inside



### Operating specifications

Model	Tube size inch(O.D)	Removal efficiency ( $\mu$ )	Filtration area (in <sup>2</sup> )	Working temperature	Weight (oz.)	Filter Element Model
VTF-0706	0.236	10	0.012	32°F ~ 140°F	0.88	VTFE-0706
VTF-1208	0.315	10	0.019	32°F ~ 140°F	1.39	VTFE-1208



(inch)

Model	L	D1	D2	F1	F2
VTF-0706	2.185	0.24	0.73	0.39	0.78
VTF-1208	2.57	0.315	0.885	0.55	0.95

## Line Vacuum Filter (LV-filter)

These filters provide a cost effective in line vacuum filtration method. The 6mm push fit version is useful for individual lines particularly with **the Online pump & Multiple stack pumps**.

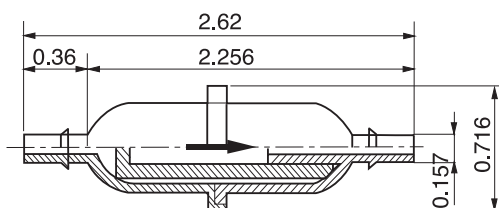
The 3/8" Version can be screwed directly into the Mini type vacuum pump as well as any other port using a 3/8"-BSP connection, when used with **the mini pumps & midimultiple pumps** it provides a very compact set up.



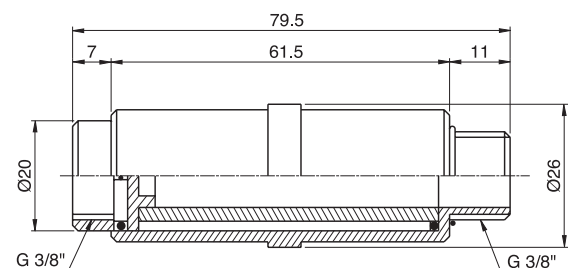
### Operating specifications

Model	Port Size	Internal Volume (in <sup>3</sup> )	Removal efficiency ( $\mu$ )	Material	Working temperature	Weight (oz.)
VTF06-IN	0.157" (inner)	0.244	20	PP, PE	32°F~176°F	0.14
VTF38-IN	3/8"	1.22	20	PP, PE	32°F~176°F	0.49

#### VTF06-IN



#### VTF38-IN



[ Measure unit : inch ]