

## Order No.

**V17 - P C**  
 ①      ②      ③

### ① Pressure range

- **V17** – Negative pressure (-29.9 ~ 0 inHg)

### ② Output type

- No mark – NPN Open Collector
- **P** – PNP Open Collector

### ③ Analog output & Cable specification

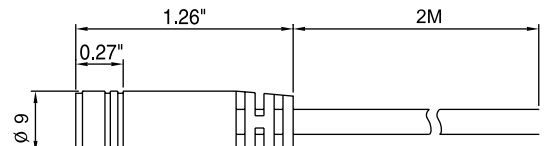
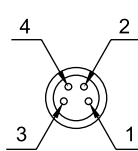
- **C** – No analog supply, M8, 4-Pin male connector
- **G** – No analog supply, Grommet type 4-Core 2m lead wire
- **GA** – Analog supply, Grommet type 5-Core 2m lead wire



### VCM8 4 2 (Female Connector)

2 : 2M Lead wire  
 4 : 4 Pin connector  
 VCM8 : M8-Female thread connector

- (1) Brown(+)
- (2) White (OUT2)
- (3) Blue (-)
- (4) Black (OUT1)



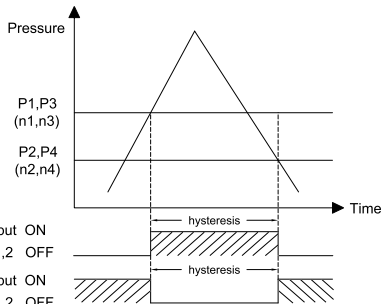
## specifications

Specifications	Model	V17 - ② G	V17 - ② C	V17 - ② GA
Applicable fluid		Air, Non corrosive gases, Incombustible gases		
Pressure range		-29.9 ~ 0 inHg		
Withstand pressure		kPa:0.1, MPa:-, kgf/cm <sup>2</sup> :0.001, bar:0.001, psi:0.01, InHg:0.1, mmHg:1, mmH <sub>2</sub> O:0.1		
Pressure port		M5 Female(Nylon material)		
Power supply voltage		12~24 VDC ±10%, Ripple (P-P) 10% or less		
Power consumption		≤ 55 m A		
Output		NPN : open collector 2 output Max. load currunt : 80mA Max. supply volatage : 30VDC Residual voltage : ≤1V(load currunt 80mA)	PNP : open collector 2 output Max. load currunt : 80mA Max. supply volatage : 24VDC Residual voltage : ≤1V(load currunt 80mA)	
Analog output		-		Output voltage: 1~5V ≤ ±2.5%F.S. (Within rated pressure range) Linearity: ≤ ± 1% F.S.
Environment	Repeatability (switch output)	≤±0.2% F.S. ±1digit		
	Response time	≤25ms (chattering-proof function: 24ms, 192 and 768ms selections)		
	Protection structure	IP40		
	Operating ambient temp. (°F)	Operation : 32°F~122°F, Storage : -4°F~140°F(No condensation or freezing)		
	Operating humidity	Operation / Storage : 35~85% RH (No condensation)		
	Vibration resistance	Total amplitude 1.5mm, 10Hz~55Hz~10Hz scan for 1minute, two hours each direction of X, Y and Z		
	Shock resistance	980 m/s <sup>2</sup> (100G), 3 times each in direction of X, Y and Z		
Temperature characteristic	≤±2% F.S. of detected pressure (77°F) at temp. Range			
Hysteresis mode	Adjustable			
Window comparator mode	Fixed (3digit)			
Indicator accuracy	≤±2% F.S. ±1 digit (ambient temp.:77±37.4°F)			
Cable	Oil-resistance cable (0.15mm <sup>2</sup> )			
Weight (oz.)		2.65	1.23	2.64

## Operating mode

### Hysteresis mode :

Output hysteresis valve can be pre-setted.

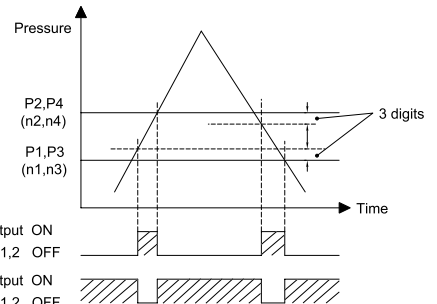


Normal open mode  
Output ON 1,2 OFF

Normal close mode  
Output ON 1,2 OFF

### Window comparator mode :

Within pressure setting range, Pressure transfer output can be ON or OFF.

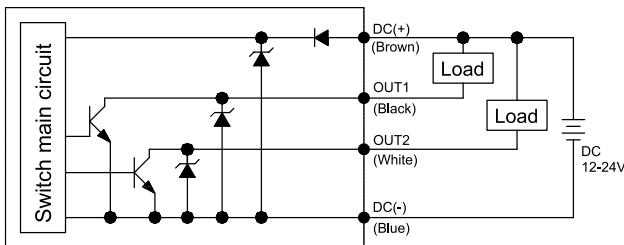


Normal open mode  
Output ON 1,2 OFF

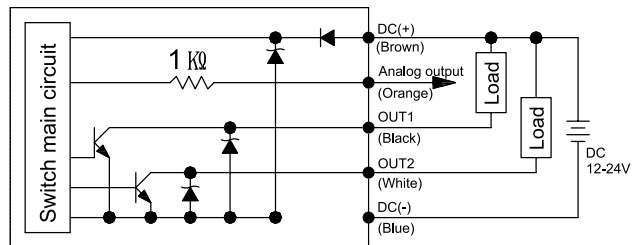
Normal close mode  
Output ON 1,2 OFF

## Circuit diagram

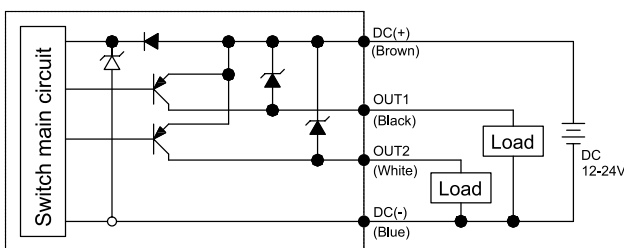
### V17-C, V17-G NPN output



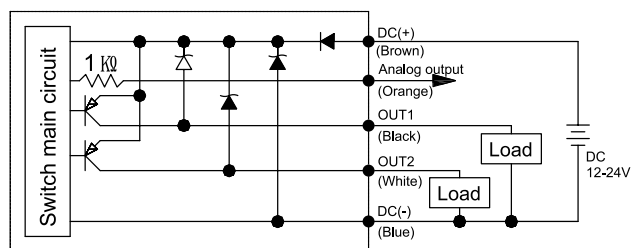
### V17-GA NPN output



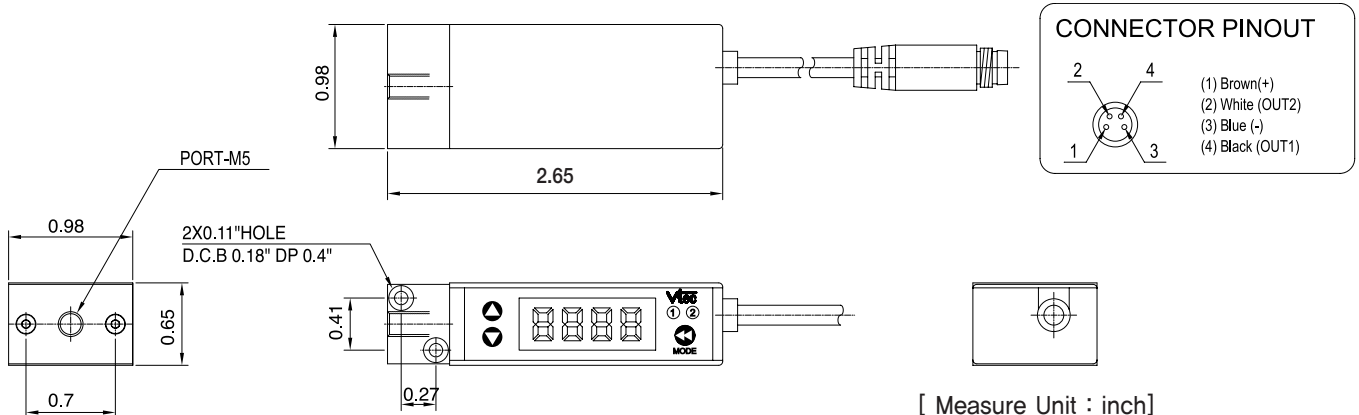
### V17 PG PNP output



### V17-PGA PNP output



## Dimension



[ Measure Unit : inch ]