

VB-M Series (Direct Fitting Bellows)

Features and Strengths

Same general advantages to that of the normal bellows cups but can be fitted directly onto a piece of pipe, thus making installation very simple and reducing cup costs to a minimum, very suitable for integration to packaging machines.



Suitable for Handling

- Cardboard
- Packaging Materials
- Thin Film Sheets
- Sheet Veneer
- Plastic Sheets



Order No.

VB30M N F
 ① ② ③

① Diameter

- VB20M – 0,86"
- **VB30M** – 1,33"
- VB50M – 2,08"

② Material

- **N** – NBR (VB20M, VB30M, VB50M)
- S – Silicon (VB20M, VB30M, VB50M)
- WS – White Silicon (VB20M, VB30M, VB50M)
- CS – Conductive (Special mat'l) (VB20M, VB30M, VB50M)
- U – Urethane (VB20M, VB30M, VB50M)
- A – Mark Free (VB20M, VB30M, VB50M)
- PU – Poly Urethane (VB20M, VB30M, VB50M)
- WPU – Poly Urethane (Minimal mark)(VB20M, VB30M, VB50M)

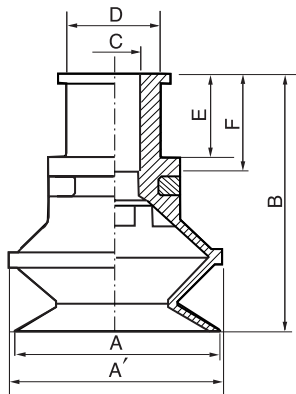
③ Filter

- no mark – Standard
- **F** – With filter(PE) (VB30M, VB50M)

Recommended (max.) lifting forces

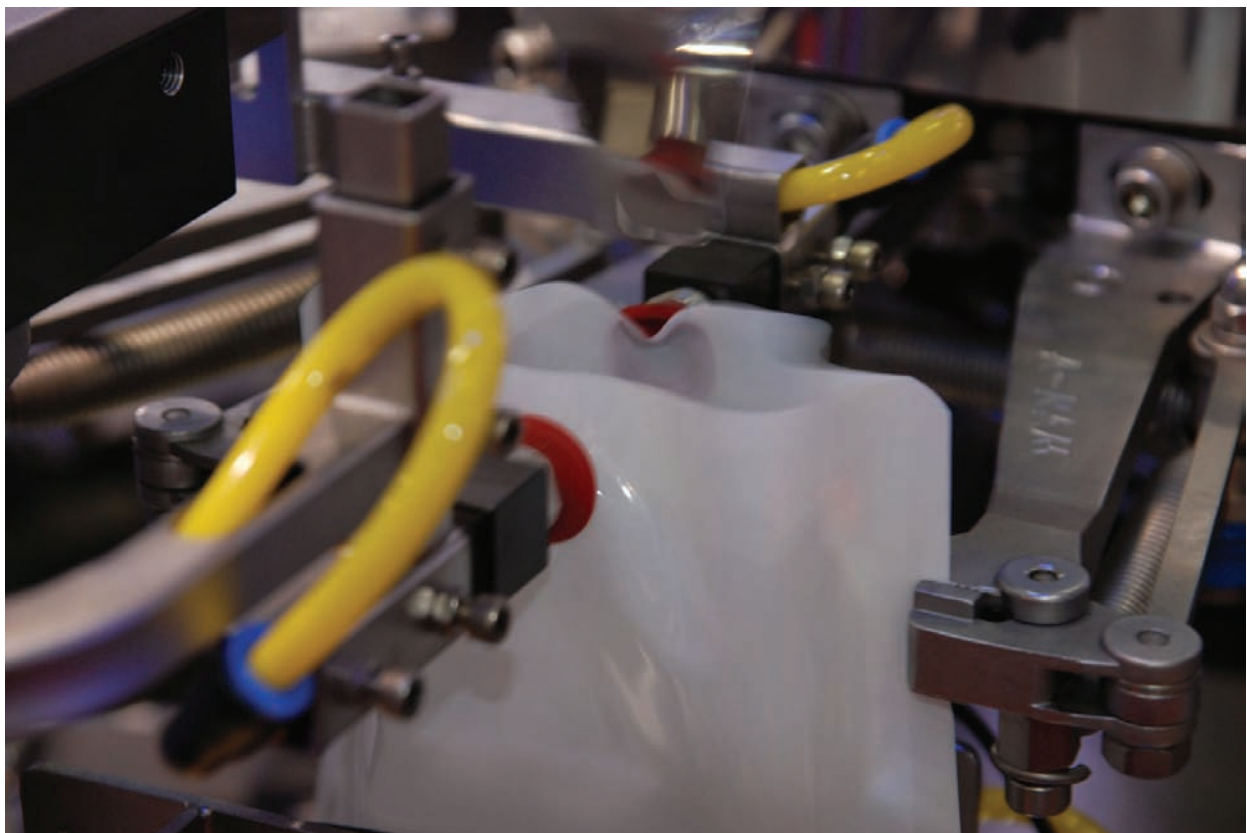
Model	Volume (inch ³)	Lifting Force (lb.f) –Perpendicular		
		–6 inHg	–18 inHg	–27 inHg
VB20M	0.16	1.54	2.64	3.52
VB30M	0.61	3.3	5.73	8.59
VB50M	1.95	7	17.4	23.14

Dimensional Information



[inch]

Model	A	A'	C	D	E	F	B
VB20M	0,86	0,94	0,23	0,39	0,35	0,41	1,1
VB30M	1,33	1,41	0,33	0,55	0,55	0,62	1,57
VB50M	2,08	2,24	0,49	0,78	0,66	0,78	2,04



▲ Plastic pack opening / VTEC Bellows Cup - VB20M